



Prongineer R&D Ltd.

Innovation for Environment

Contact: Babak Rezania, PhD., P.Eng.

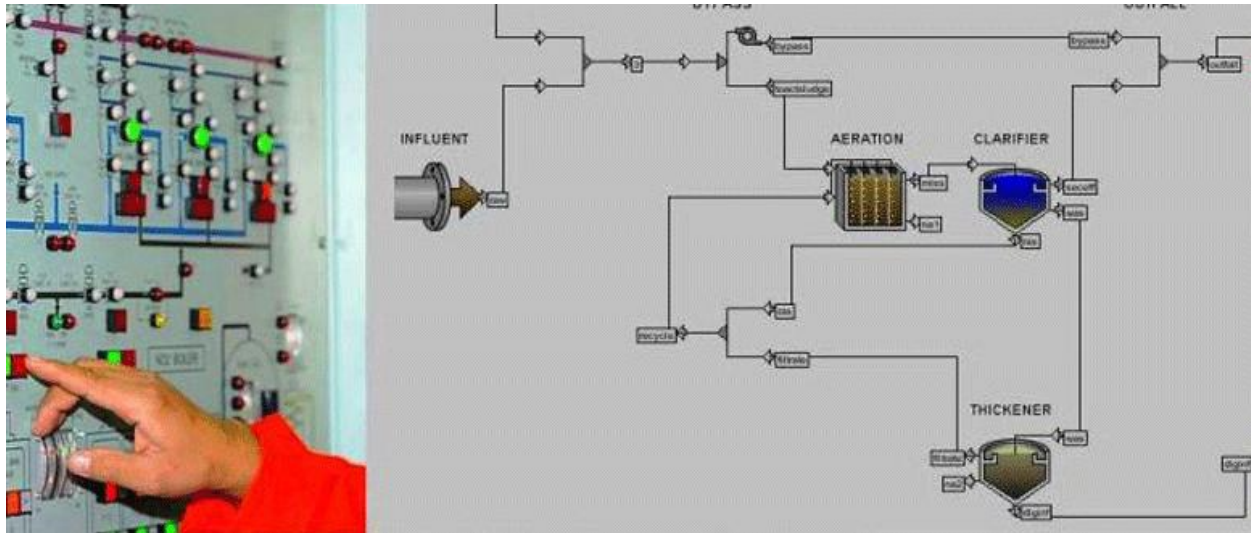
Telephone: 604-761-4061

Email: rezania@prongineer.com

GPS-X Platform Wastewater Treatment Plant Operators and Engineers

What is the GPS-X Operation Module?

The GPS-X operation module is an SCADA like platform (See Photo Below) that will be built and calibrated for a specific plant to assist with the operation and planning. This would allow the plant staff to foresee the performance of each unit operation and final effluent quality. The operator can change any operating parameters such as influent flow and loads, sludge wasting, aeration rate, temperature, I&I, volume of tanks or takes out equipment for service to see the effect on operation. This will give a valuable tool to operators and engineering staff for plant optimization, emergency response and future planning.



What treatment processes include in the model?

The model will include liquid and solid process trains for primary, secondary and tertiary plants. All process configurations such as trickling filter solids contact, activated sludge/BNR, MBBR and IFAS, BAF, SBR, MBR can be included. Solid process train include: dewatering, digestion and centrate treatment.

What operator can change?

The operator is able to change the operation and size of any process such as aeration rate, sludge wasting, temperature, influent flow and loads and see the impact of this changes on the screen of his/her computer.

Please contact us for more information